

Würzburg Switches | FFU[®] Synthetic Wood



September 2012

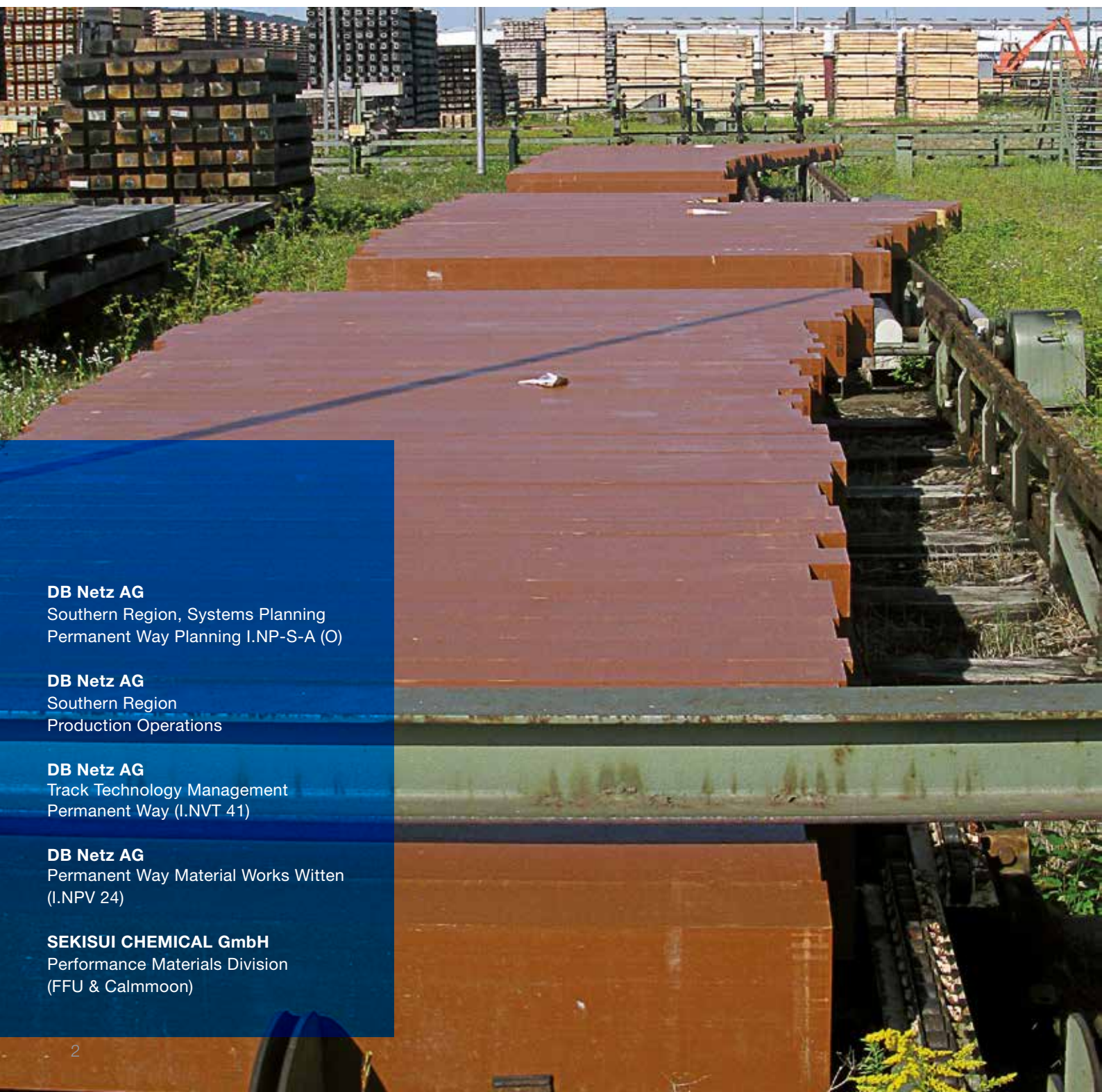
In September 2012 DB AG fitted the first two switches on FFU synthetic sleepers.

As part of the FFU trials the switches 373 - EW 54-300-1:9 and 374 - EW 54-500-1:12 were fitted in the area of Würzburg station on the line section 5209-Rottendorf-Würzburg.

The design speed of the switches on a main line is 60 km/h, the speed on a branch line is 50 km/h for the 373 switch and 60 km/h for the 374 switch.

About 60,000 tons of rolling stock move over each of these switches on a daily basis.

As a first step the FFU synthetic sleepers were sent to the DB sleepers works in Schwandorf for plating.



DB Netz AG
Southern Region, Systems Planning
Permanent Way Planning I.NP-S-A (O)

DB Netz AG
Southern Region
Production Operations

DB Netz AG
Track Technology Management
Permanent Way (I.NVT 41)

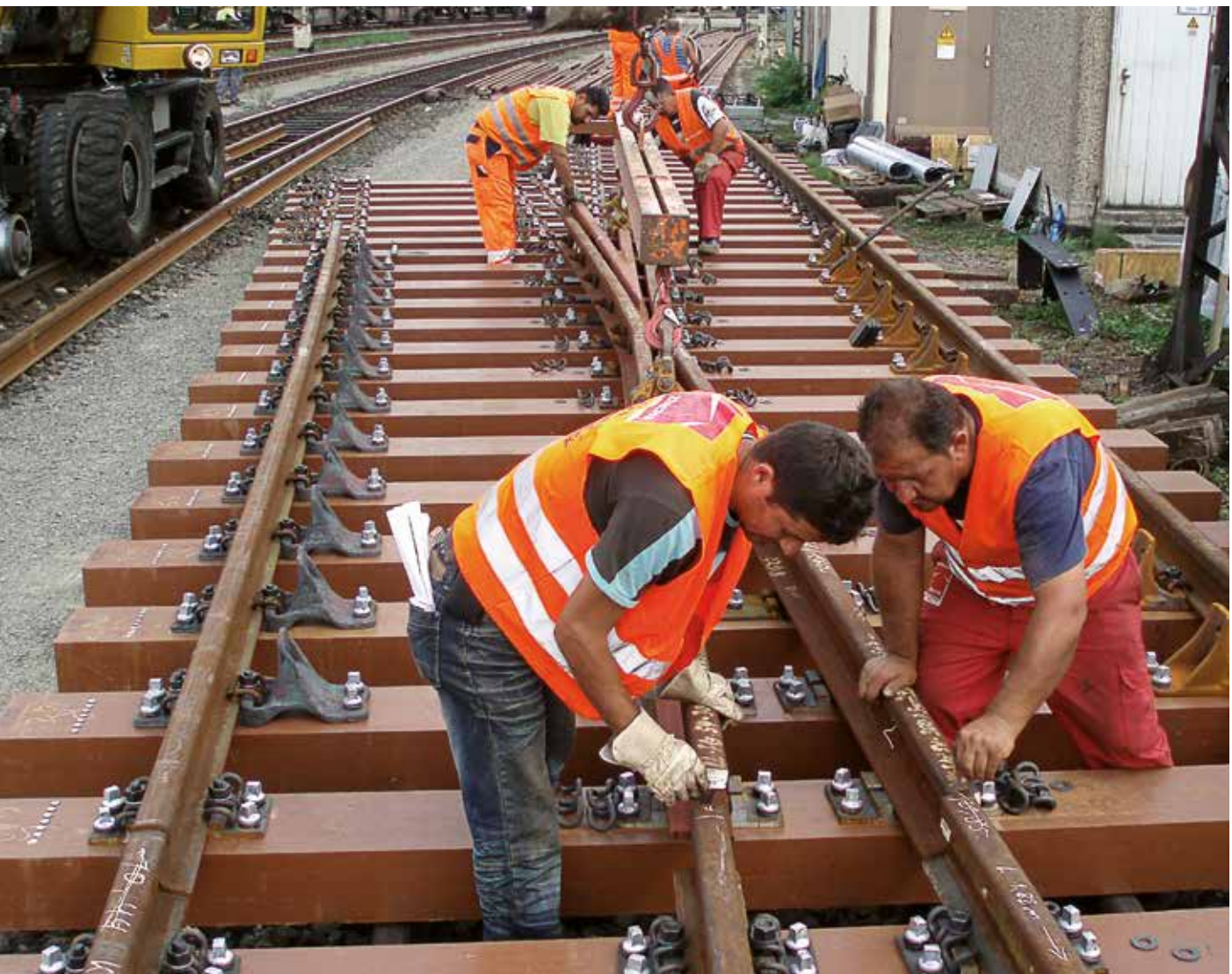
DB Netz AG
Permanent Way Material Works Witten
(I.NPV 24)

SEKISUI CHEMICAL GmbH
Performance Materials Division
(FFU & Calmmoon)

In Schwandorf: Use of computer-controlled automatic drilling machines to bore the holes in the FFU synthetic sleepers. After a short rail-bound transport the FFU synthetic sleepers were marked according to the switch drawing; then the individual support components such as the grooved plate, rail pad and sleeper screw were fitted and screwed on. Interim storage, ready for delivery to the work site.



At the work site:
Pre-assembly of individual
sleepers and switch rodding to
units ready for transport.





During the night of 8th September: Transport of the switch components from the assembly point to their final location using a railway crane; fish-plating and ballasting.





9th September: Tamping of the switches and welding of rails

**DB Netze AG**

Southern Region
Systems Planning
Rainer Henz, Project Manager
Permanent Way Planning I.NP-S-A (O)

Rimparer Straße 7
D - 97080 Würzburg
Tel. +49 (0)931 34-6821
Fax +49 (0)931 34-1837, internal 968
Email: rainer.henz@deutschebahn.com

DB Netze AG

Southern Region
Production Operations
Roland Wolf,
Systems Manager

Rimparer Straße 7
D - 97080 Würzburg
Tel. +49 (0)931 34-6855
Fax +49 (0)931 34-2308, intern 968
Email: roland.wolf@deutschebahn.com

DB Netz AG

Heinrich Dratwa
Technology Management
Track Technology

Track (I.NVT 41)
Mainzer Landstraße 181
D - 60327 Frankfurt/M
Tel. +49 (0) 69 265-45213
Fax +49 (0) 69 265-45218, internal 955
Email: Heinrich.Dratwa@deutschebahn.com

DB Netz AG

Christian Suhren
Permanent Way Materials Works Witten
Manager Sleeper Works Schwandorf
(I.NPV 24)

Schwellenwerkstraße 15
D - 92421 Schwandorf
Tel. +49 (0)9431 29-394
Fax +49 (0)9431 29-361, internal 9698
Email: christian.suhren@deutschebahn.com

SEKISUI CHEMICAL GmbH

Clemens Bretschneider
Performance Materials Division
(FFU & Calmmoon)
Urban Infrastructure & Environmental

Products Company
Königsallee 106
D-40215 Düsseldorf
Tel: +49-(0)211-36977-0
Fax: +49-(0)211-36977-31
Email: bretschneder@sekisui.de